



Dreams do come true.

Imagine a verdant setting brimming with energy and dotted with tree-lined avenues, colorful parks, a designer swimming pool, modern club house and a host of other delights. Imagine a place where natural splendor blankets you and puts a song in your heart. Where life is serene, secure and splendid. Now imagine building you dream villa here and owning a piece of heaven.

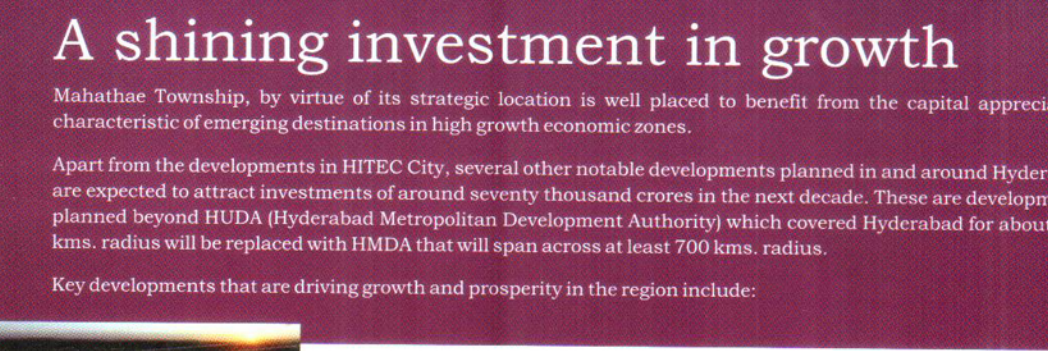
And what if we said this is not a dream but a reality?

Welcome to Mahathae Township, a breathtaking residential project featuring all the modern amenities that define happy living. This aspirational project come to you from RudraSree Housing Pvt. Ltd., a trusted developer reputed for its ability to design and deliver unique residential projects that meet your housing and investment requirements.

The project coming up on a DTCP layout, offers vastu-compliant residential plots in different sizes (146 Sq. Yds., 165 Sq. Yds. and 200 Sq. Yds.) to meet your requirement. It's the perfect choice for those seeking to fulfill their dream of owning a home in a happening place. What's more, the project also makes for a brilliant investment as it is located in hotbed of growth and offer immense potential for capital appreciation.

RudraSree Housing Pvt. Ltd. is one of the leading real estate companies in Hyderabad, promoting quality ventures since 1992. Its latest venture is Mahathae Township at Mothi Ghanpur Village, Balanagar Mandal, Mahabubnagar district Survey No.s 488, 489, 490, 506, 507. Mahathae Township is beautifully landscaped with DTCP Layout. The site is abutting the 6-lane Bangalore National Highway-7.

Investment opportunities may be plenty but investment in Mahathae Township is safe and yields highest returns as the venture is located in the most happening place in Hyderabad and growth potential is very high.



A shining investment in growth

Mahathae Township, by virtue of its strategic location is well placed to benefit from the capital appreciation characteristic of emerging destinations in high growth economic zones.

Apart from the developments inHITEC City, several other notable developments planned in and around Hyderabad are expected to attract investments of around seventy thousand crores in the next decade. These are developments planned beyond HUDA (Hyderabad Metropolitan Development Authority) which covered Hyderabad for about 250 kms. radius will be replaced with HMDA that will span across at least 700 kms. radius.

Key developments that are driving growth and prosperity in the region include:



Rajiv Gandhi International Airport

Asia's biggest international airport spread over an extent of 5500 acres serves as an international hub for air traffic from US, Europe and Far-East.

Pharma SEZ

The State Government is planning an exclusive pharma zone (SEZ) at Jadcherla in Mahabubnagar District, about 70 kms. from Hyderabad and 40 kms from the new International airport at Shamshabad.

Vaccine Project

The Union Government has cleared the Rs. 400 crore Vaccine Project to be set up in Jadcherla in Mahabubnagar District – a significant investment that can add to the growth prospects of the region.

Business University

A Business University is coming up near Jadcherla in Mahabubnagar District, 70 kms from Shamshabad International airport.

Rs. 3200 crore Outer Ring Road Project

This mega development project is creating the infrastructure and road network for the growth of the city. Several commercial projects and residential zones are planned along ORR in the next decade.

MMTS

This project will link all key areas of the city by local trains in the next decade. This will help ease traffic congestion as more and more people opt for safe, economical and pollution-free transport facilities.

Hardware Park

India's first hardware park is slated to come up on the outskirts of Hyderabad, adjacent to Infosys.

HUDA Townships

Atleast 50 major projects are in the planning stage (including HUDA's 22 around ORR) on the outskirts of the city. Over one lakh residential units will be created in the suburbs by the next decade that will enable migration of over 5 lakh population outer areas.

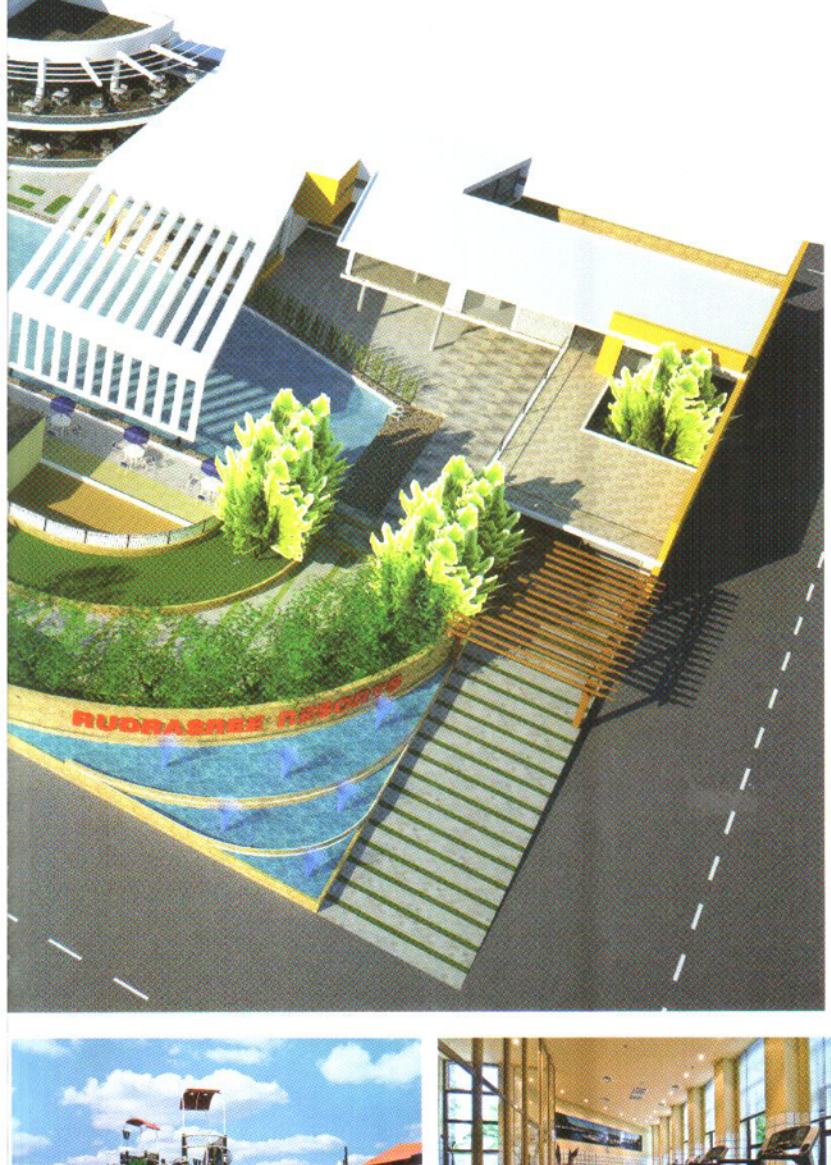
7-star Hotel and Golf Course

EMAAR Group of Dubai is to build a 7-star hotel in the proximity of Hyderabad International Airport on a land area of around 700 acres which will also contain a large golf course.



Have a nice day. Everyday!

Mahathae Township comes with a modern clubhouse featuring a wide array of facilities to complete the good life. It's so much fun to be pampered with all the goodies that epitomize fine living. Here's a peek at what's in store for you and your family at the modern Club House:

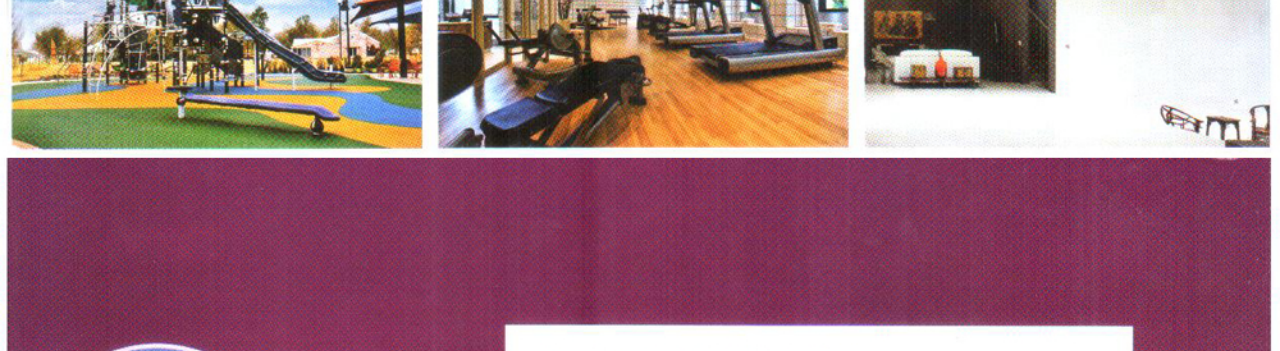


- ### Health, Fitness & Sports
- State-of-the-art fitness room
 - Wellness services
 - Outdoor Swimming pool with cabana seating
 - Well-lit hard tennis courts

- ### Leisure & Entertainment
- Children's multi-function hall
 - Games Room
 - Computer Room
 - Arts and Crafts room
 - Library

- ### Hospitality - Events & Celebrations
- A large function hall - seating capacity of 1000
 - Outdoor Marriage Hall - 3000 capacity
 - 20 Guest Rooms and 2 Suites
 - Mini Casino
 - Cards room
 - Mini Resto-bar

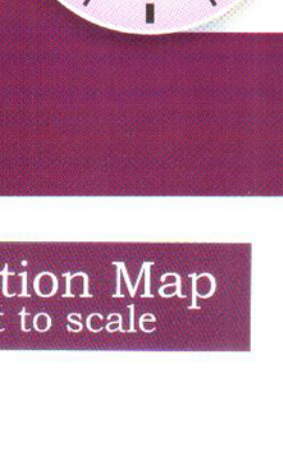
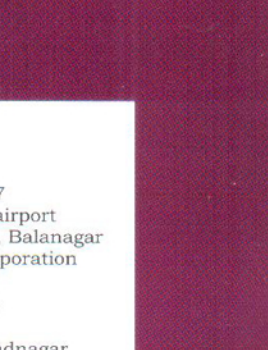
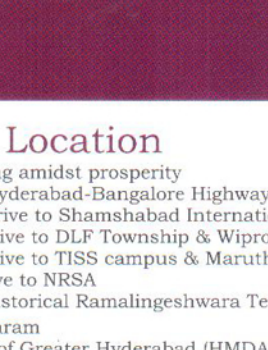
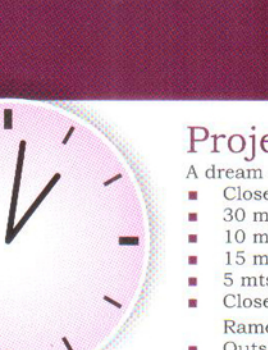
- ### Amenities
- Power and water back-up
 - 60 Car parking



Project Highlights

A host of unmatched advantages

- Plots in convenient sizes of 146 Sq. Yds., 165 Sq. Yds. and 200 Sq. Yds.
- DTCP layout
- Layout developed as per Vastu
- Avenue plantation with tree guards
- Underground drainage system
- Street lights
- Black top roads
- Overhead water tank
- Common area for temple, parks, community hall etc.
- Common fencing around the site
- Round-the-clock security
- Close to historical Ramalingeshwara Temple, Rameshwaram
- Outskirts of Greater Hyderabad (HMDA), Shadnagar

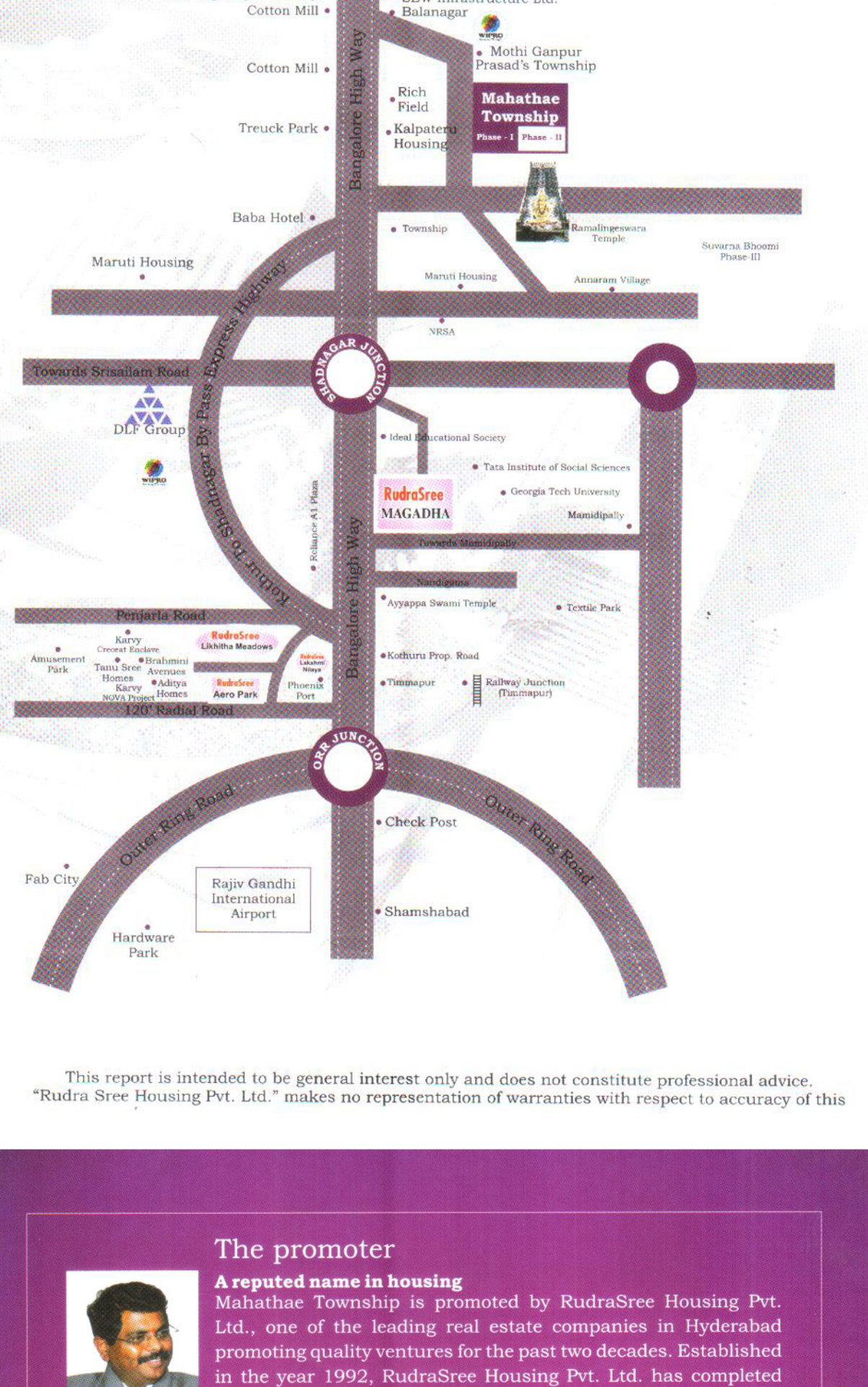


Project Location

- A dream setting amidst prosperity
- Close to Hyderabad-Bangalore Highway NH-7
- 30 mts. Drive to Shamshabad International airport
- 10 mts. drive to DLF Township & Wipro SEZ, Balanagar
- 15 mts. drive to TISS campus & Maruthi Corporation
- 5 mts. drive to NRSA
- Close to historical Ramalingeshwara Temple, Rameshwaram
- Outskirts of Greater Hyderabad (HMDA), Shadnagar

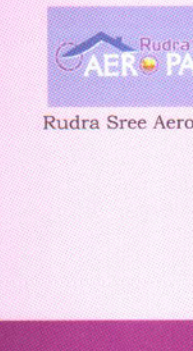
Location Map

Not to scale



This report is intended to be general interest only and does not constitute professional advice. "Rudra Sree Housing Pvt. Ltd." makes no representation of warranties with respect to accuracy of this

The promoter



A reputed name in housing
Mahathae Township is promoted by RudraSree Housing Pvt. Ltd., one of the leading real estate companies in Hyderabad promoting quality ventures for the past two decades. Established in the year 1992, RudraSree Housing Pvt. Ltd. has completed several real estate projects in Hyderabad region and is widely reputed for its high quality standards and commitment levels. RudraSree is spearheaded by Mr. Mamindla Srinivas, Managing Director. His vision of transforming the RudraSree into a class-leading infrastructure powerhouse is bearing fruit as the company expands its bouquet of offering to include construction of apartments, villas and resorts.

Completed Projects



404, Shri Datta Sai Complex, Gaddi Annaram, Dilukhannagar, Hyderabad - 500 036.
Tel.: 040-66136808, 24043353. contact@rudrasree.com | www.rudrasree.com

Branch Office

Flat No. 406, 4th Floor, Nirmal Towers, Beside Sai Baba Temple, Punjagutta, Hyderabad - 500 082. A. P.
Phone: 040-23355001. contact@rudrasree.com | www.rudrasree.com

Note: This brochure is only a conceptual presentation of the project and not a legal offering.